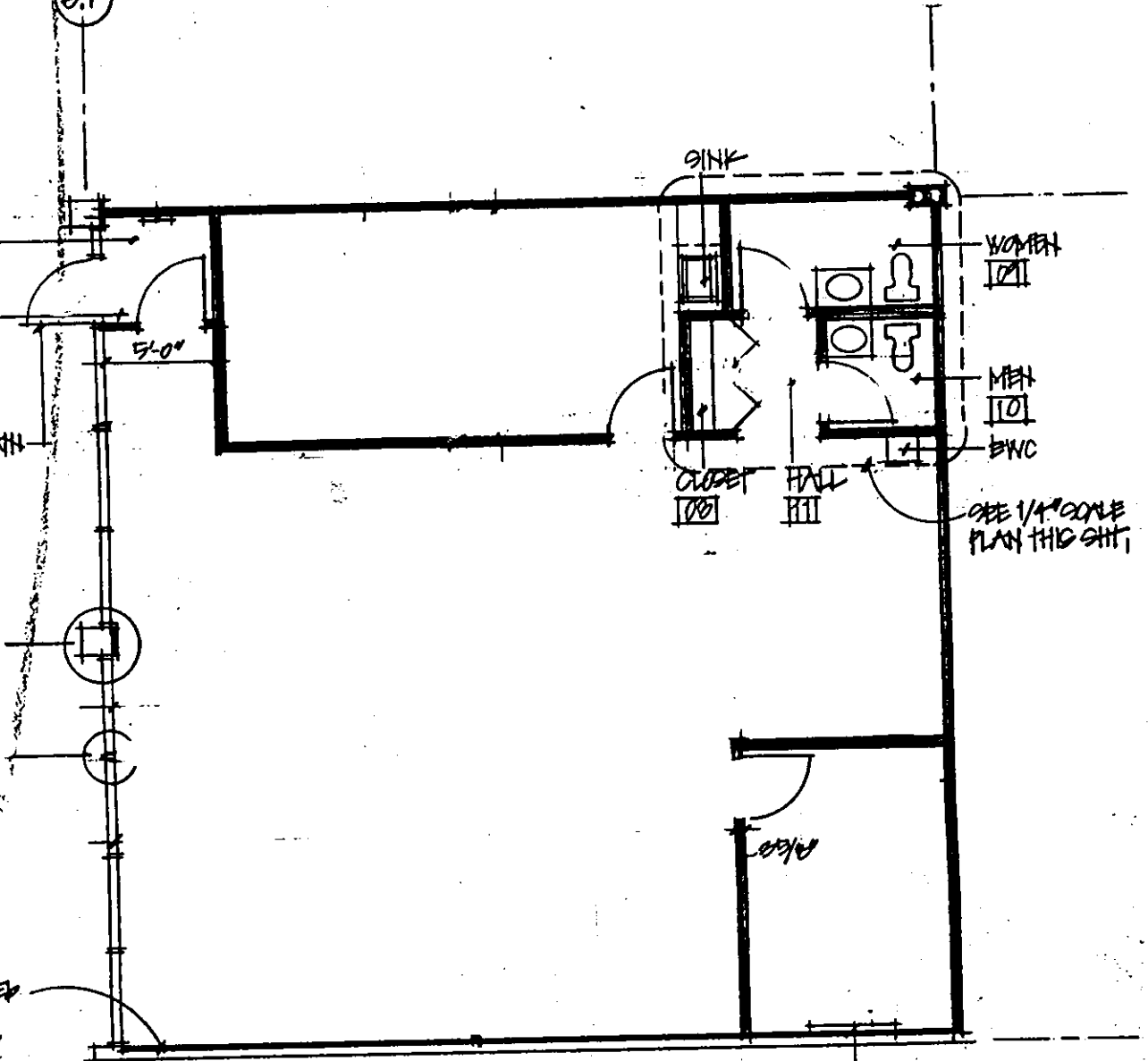


REFLECTED CEILING PLAN
1/8" = 1'-0"

NOTE 1: CENTER ACOUSTIC TILE IN BOTH DIRECTIONS IN EACH ROOM AS SHOWN IN PLAN UNLESS OTHERWISE NOTED.

0.1

ENTRY
1/2" BATT
FLOOR W/ FOIL
& WALLS
NO INS ENTRY 01
NO FLOOR TO REMAIN



TYPE X' FIRE RATED
2 1/2" ON 15" P.F.T.
NO W/ 1/2" x 2" x 4"
& INSULATION
MAX R=12

FLOOR PLAN
1/8" = 1'-0"

NOTE 1: PARTITIONS SHALL BE TYPE (A) UNLESS OTHERWISE NOTED.
2: USE GROUP OCCUPANCY SIGNAGE SHALL INCLUDE: USE GROUP B - BUSINESS OCCUPANCY 16 (BASED UPON 1600 S.F./1 PERSON PER 100 S.F.) CONSTRUCTION TYPE 20.

